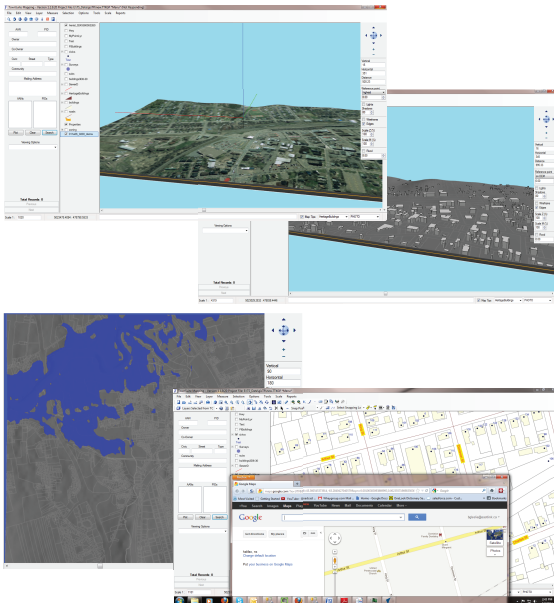
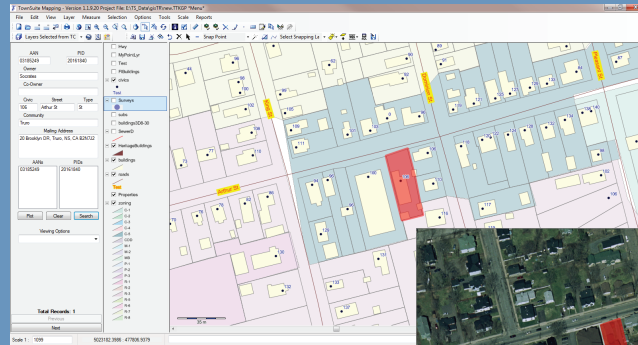


MAPPING

TownSuite Mapping is a revolutionary, easy to use GIS viewer and editor designed specifically for municipalities. Leverage your existing data to deploy GIS powered solutions to the entire organization – not only GIS Staff. No need to implement expensive resources and tools, and no technical GIS know-how is required.



Mapping is parcel-centric, integrating with assessment and land information from your Provincial Government. Mapping enables your municipality to:

- Scan and/or link any file type to a parcel, such as as-built drawing, agreements, photos, movies, etc.
- Link to any municipal data stored within your organization.
- Access GIS capabilities that would otherwise be unavailable across the municipal organization, including Zoom, Pan, Measure Distance, Titles, Annotations, Labels, Attributes (and their definition) and spatial selections.
- Access to powerful 3D GIS capabilities that include Floodplain Simulations, Digital Terrain Model (DTM) presentation, automatic draping of 2D Vector and Image Layers over a DTM, Light and Shadow control, Rendering of 3D Vectors for visual effects.

Intuitive Interface

Provide non-technical staff access to dynamic maps enabling:

- Municipal zoning
- Property boundaries
- Infrastructure
- Custom layers of data

Integrate With Google

Full integration with Google Maps and Google Earth allows the user to take the advanced functionality of Mapping to Google's robust platform.

Made To Work Together

TownSuite Municipal Software products are designed to work together as an intelligent ERP solution made just for you.

Financial | TCA | Mapping | Planning | Fire Hall